

MINNESOTA SAFETY COUNCIL

 Chapter of the National Safety Council

Drive
SAFE

Work
SAFE

Live
SAFE

TM

Drive
SAFE

Helping Make Life Safer

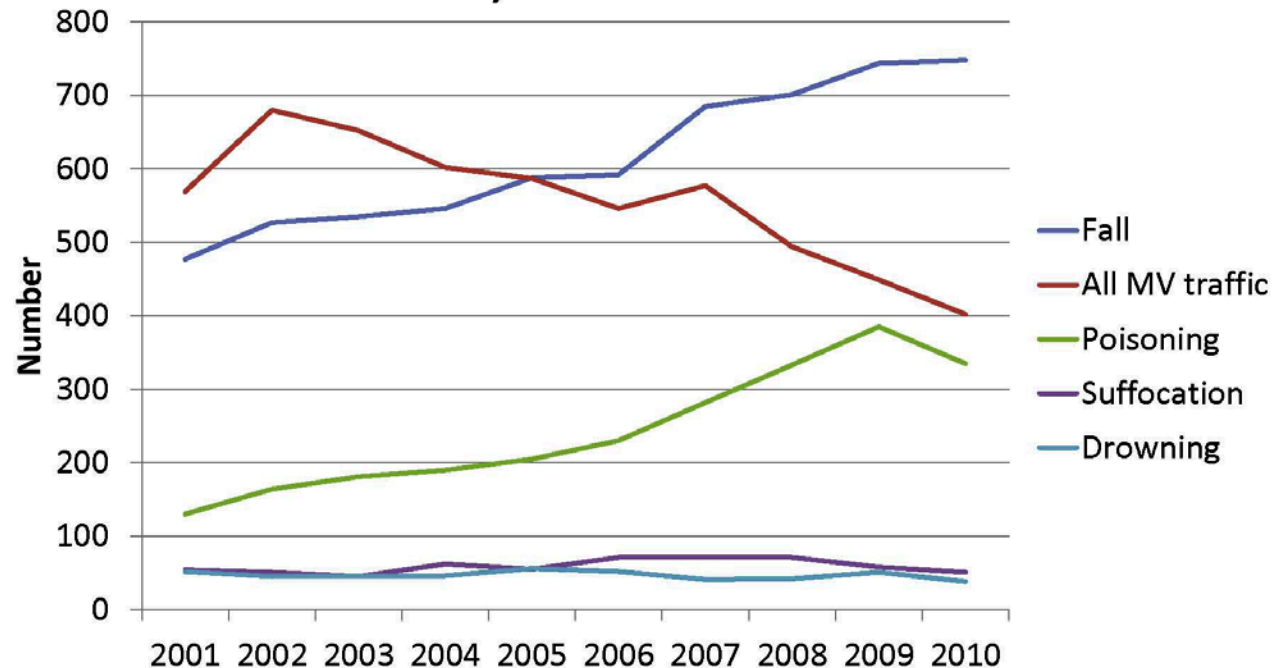


MINNESOTA
SAFETY
COUNCIL

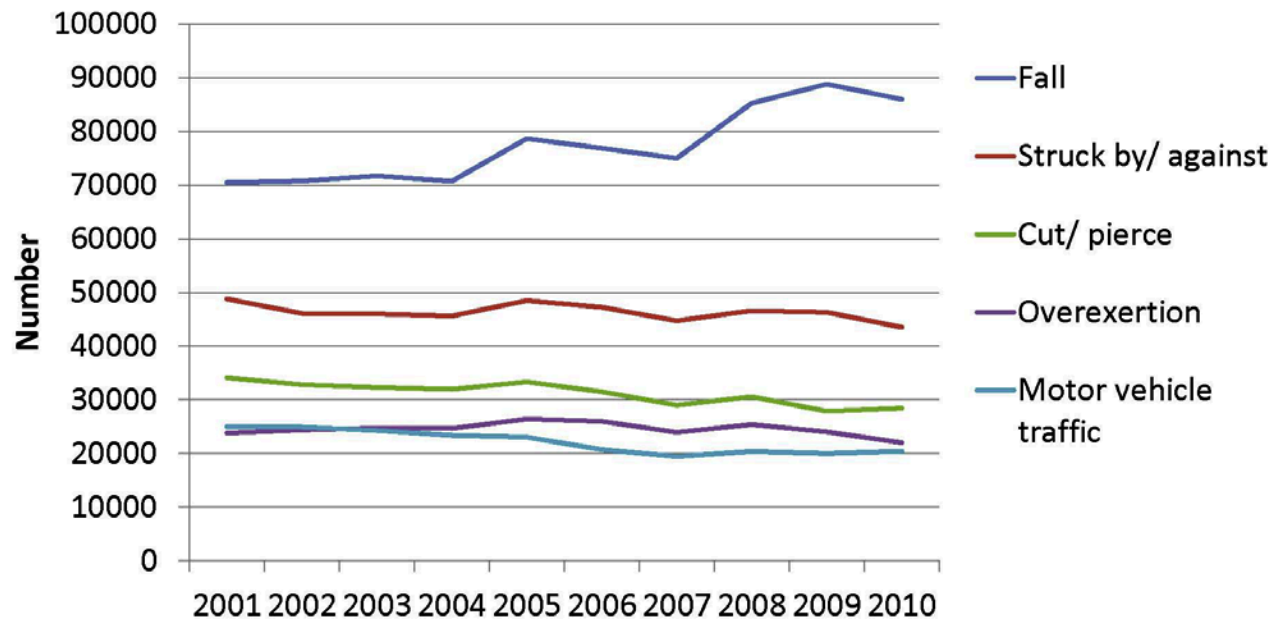


minnesotasafetycouncil.org

Top Five Causes of Unintentional Injury Death by Year MN, 2001-2010

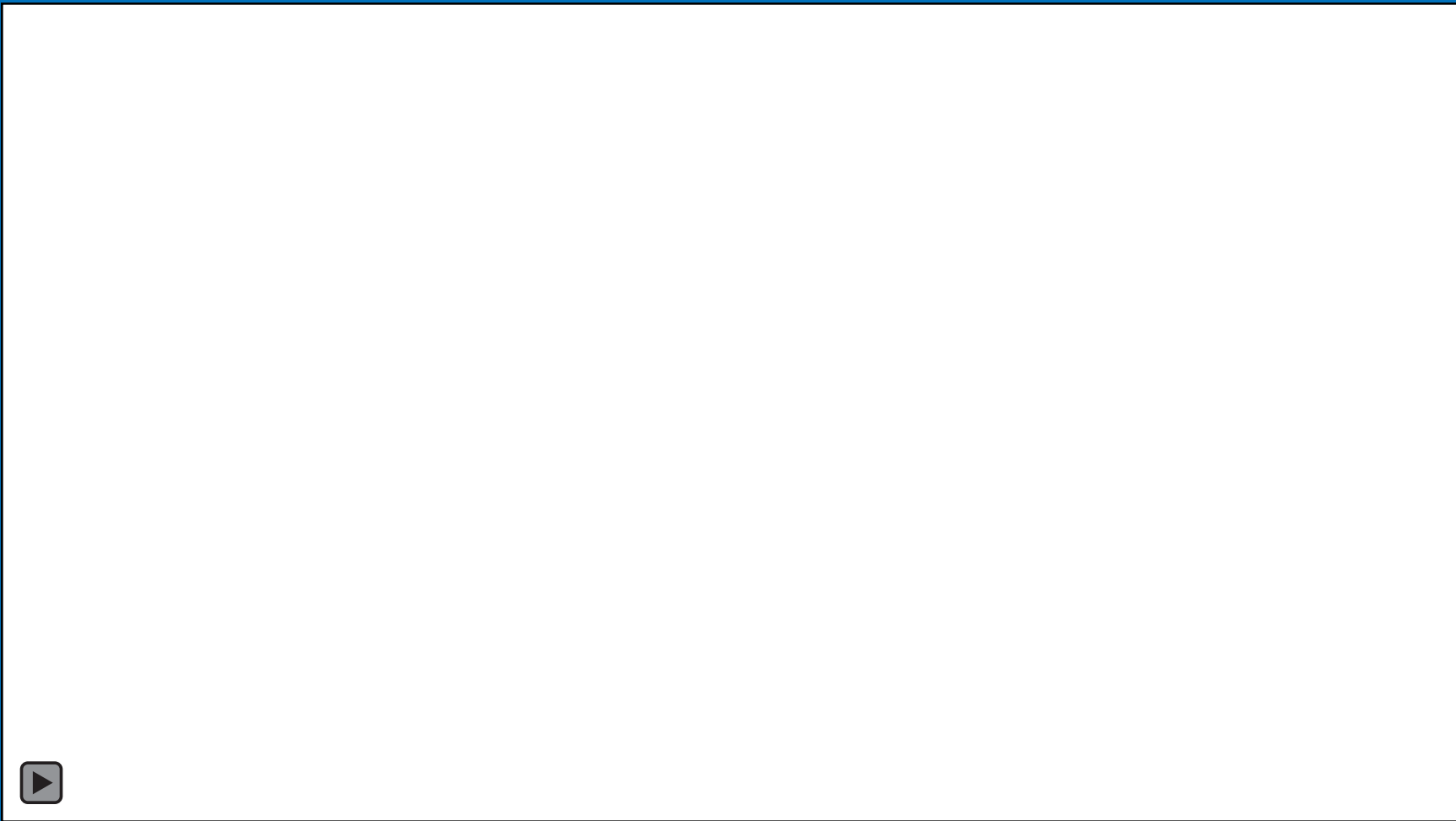


Top Five Causes of Nonfatal Emergency Department-treated Unintentional Injury by Year, MN 2001-2010



The BIG Five

- Speed
- Impairment
- Distraction
- Fatigue
- Everything else



MINNESOTA
SAFETY
COUNCIL



minnesotasafetycouncil.org



= Underdriving



= Overdriven

MINNESOTA
SAFETY
COUNCIL



minnesotasafetycouncil.org

1

100

200

\$4,500,000

(On an average MN day)

MINNESOTA
SAFETY
COUNCIL



minnesotasafetycouncil.org

Behavior

Engineering

Regulation

If we are serious about...
safety at work and on the road
Then we would...
talk about fatigue.

MINNESOTA
SAFETY
COUNCIL



minnesotasafetycouncil.org

U.S. estimates of work-related all-cause injury incidence (per 100 workers) by usual daily sleep

Usual Hours Slept / Day	Number of Workers (NHIS 2004-08)	Percent of Workers	Number of est. Work-related Injuries Annually	Number of est. Workers Annually	Est. Annual Injury Incidence per 100 Workers ¹
< 4.99 h	1,431	1.9	83,730	1,061,759	7.89
5 - 5.99 h	4,407	5.9	172,462	3,310,950	5.21
6 - 6.99 h	17,251	22.9	469,756	12,988,074	3.62
7 - 7.99 h	25,950	34.5	448,458	19,774,245	2.27
8 - 8.99 h	22,604	30.0	413,942	16,571,317	2.50
9 - 9.99 h	2,361	3.1	39,101	1,759,342	2.22
> 10 h	1,267	1.7	41,694	883,551	4.72
Total	75,271	100.0	1,669,142	56,349,239	2.96

¹Includes individuals reporting employment at a job or business and those who had reported usual sleep hours.

(Source: Lombardi DA, Folkard S, Willets JL, Smith GS. Daily sleep, weekly working hours, and risk of work-related injury: US National Health Interview Survey (2004-2008). Chronobiol Int, 2010 Jul; 27(5):1013-30.

MINNESOTA SAFETY COUNCIL

 Chapter of the National Safety Council



Why Have a Distracted Driving Policy?

Presented by:

Lisa Kons, Traffic Safety Program Manager, Minnesota Safety Council
Coordinator, Minnesota Network of Employers For Traffic Safety



Making Minnesota a Safer Place to Live



One of the most
DANGEROUS

Things most people will do today is
their drive to and from work!



MINNESOTA
SAFETY
COUNCIL

Drive
SAFE

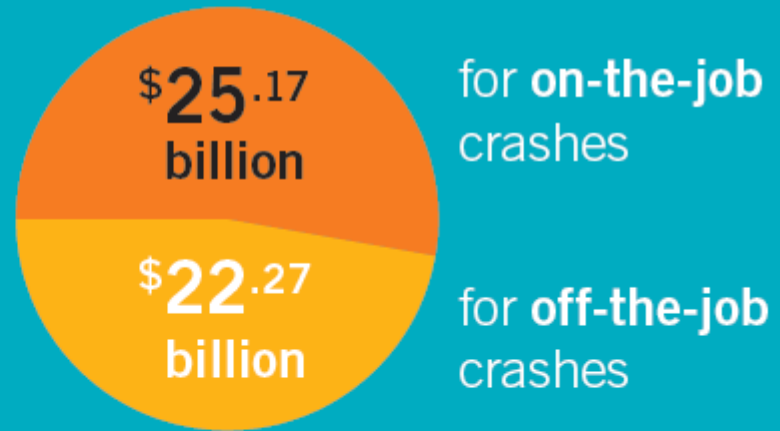
Work
SAFE

Live
SAFE

minnesotasafetycouncil.org

THE COST OF CRASHES TO EMPLOYERS

\$47.44
BILLION
in 2013



MINNESOTA
SAFETY
COUNCIL



minnesotasafetycouncil.org

DRIVER BEHAVIOR HAS A DIRECT EFFECT ON EMPLOYER CRASH COSTS



SPEEDING

\$8.4

BILLION



DISTRACTED
DRIVING

\$8.2

BILLION



ALCOHOL

\$6

BILLION



NOT WEARING
SEAT BELT

\$4.9

BILLION

MINNESOTA
SAFETY
COUNCIL

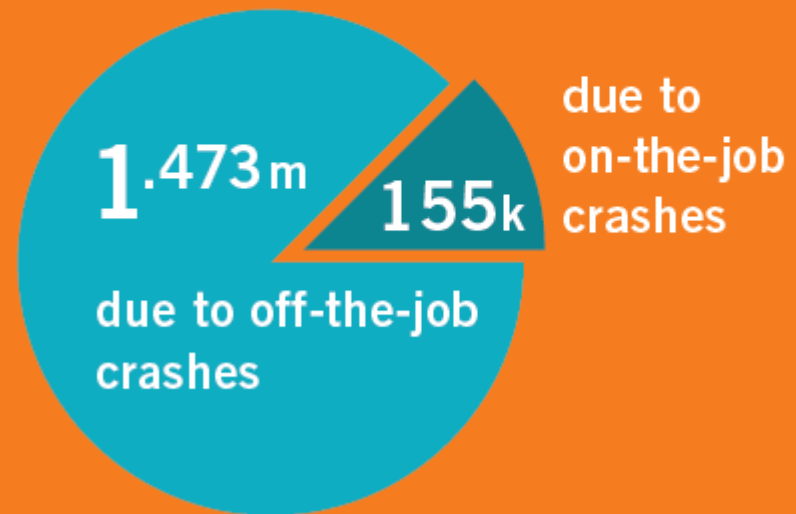


minnesotasafetycouncil.org

CRASHES COST EMPLOYERS WHENEVER THEY OCCUR

Lost Work Days

1.628
MILLION
Total



MINNESOTA
SAFETY
COUNCIL



minnesotasafetycouncil.org

Contact Information

Lisa Kons

Minnesota Safety Council

474 Concordia Avenue

St. Paul, MN 55103

651.228.7330

800-444-9150 xt. 330

Lisa.kons@minnesotasafetycouncil.org

MINNESOTA
SAFETY
COUNCIL



minnesotasafetycouncil.org