



Prescription for Hope

Hospital-Based Violence Intervention Program

**Smith Level I Shock Trauma Center at
Eskenazi Health**

Wendy St. John, RN
Trauma Program Manager

Objectives

- Understand the “revolving door” phenomenon of the emergency department and shock trauma center involved with violent injury patients.
- Describe the “teachable moment and cultural competence” for working with youth violence.
- Define trauma, violent injury and youth violence.



Sidney and Lois Eskenazi Hospital



Smith Level I Shock Trauma Center



Trauma

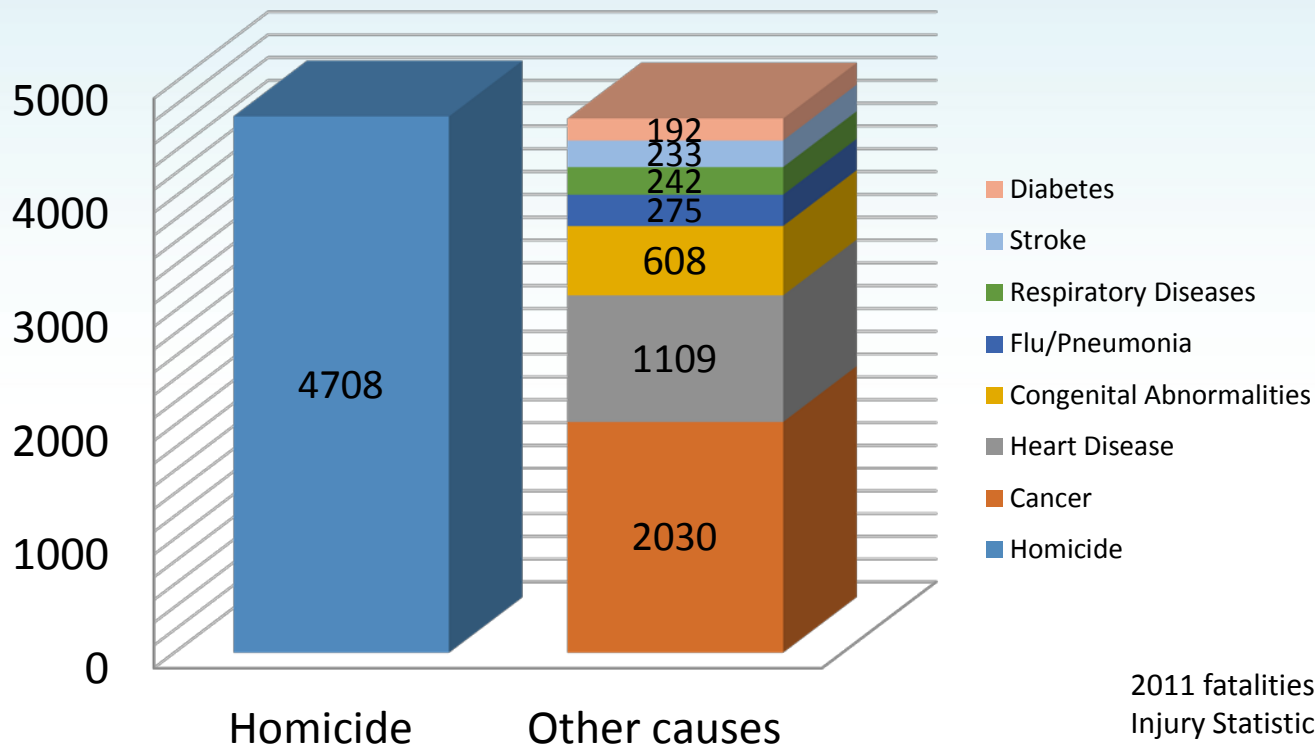
- Intentional
 - GSW
 - National Average is 7%
 - Eskenazi Average is 35%
 - Stabbing
 - Assault
- Unintentional
 - MVC's
 - Falls
 - Fires
 - Drowning

Trauma and Injury (2013)

- Leading cause of death ages 1-44
 - 192,945 deaths/United States
 - 4,409 deaths/Indiana
-
- 30,888,063 Non-fatal injuries/United States

Scope of the Problem

- More youth aged 10-24 die from homicide than from the next seven leading causes of death



2011 fatalities; Web-based Injury Statistics Query and Reporting System (WISQARS)

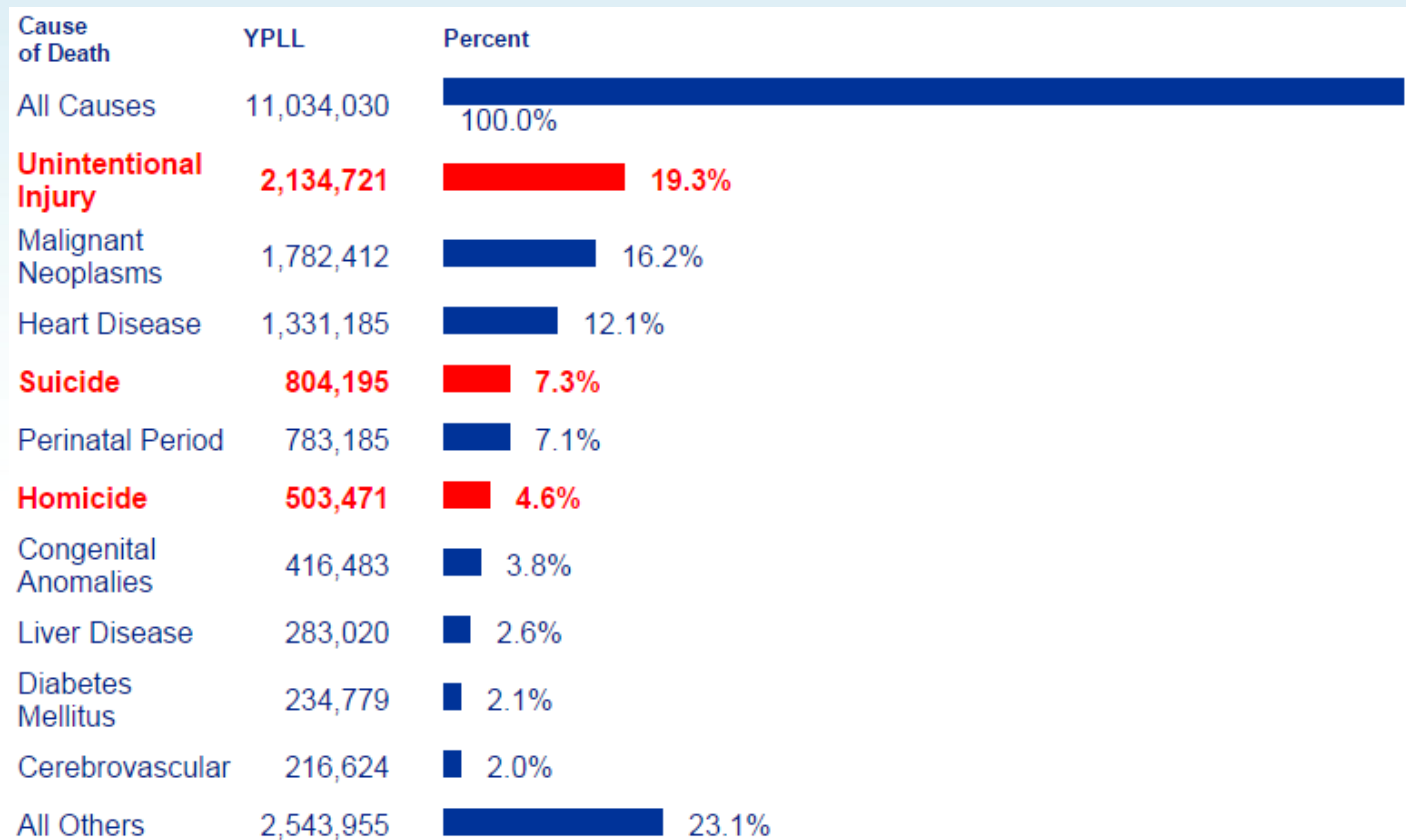
Cost of Violence (2010)

- \$9,000,000,000.00
 - Medical care/lost wages due to homicide
- \$8,500,000,000.00
 - Medical care/lost wages due to nonfatal injury
- \$17,500,000,000.00
 - Total NOT including
 - Criminal justice cost
 - Mental health care
 - Schools
 - Property
 - Social services

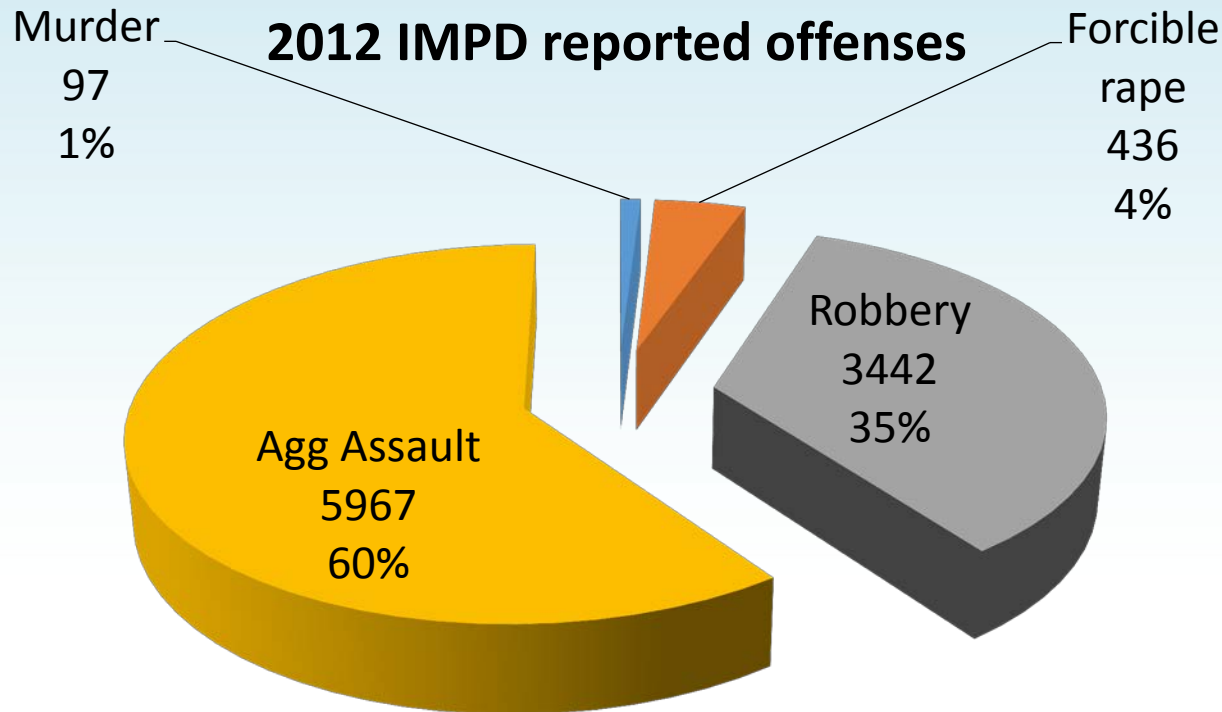
David-Ferdon C, Simon TR. Preventing Youth Violence: Opportunities for Action. Atlanta, GA: National Center for Injury Prevention and Control, Centers for Disease Control and Prevention, 2014.

YPLL (2013)

- Years of potential life lost



Scope of the Problem

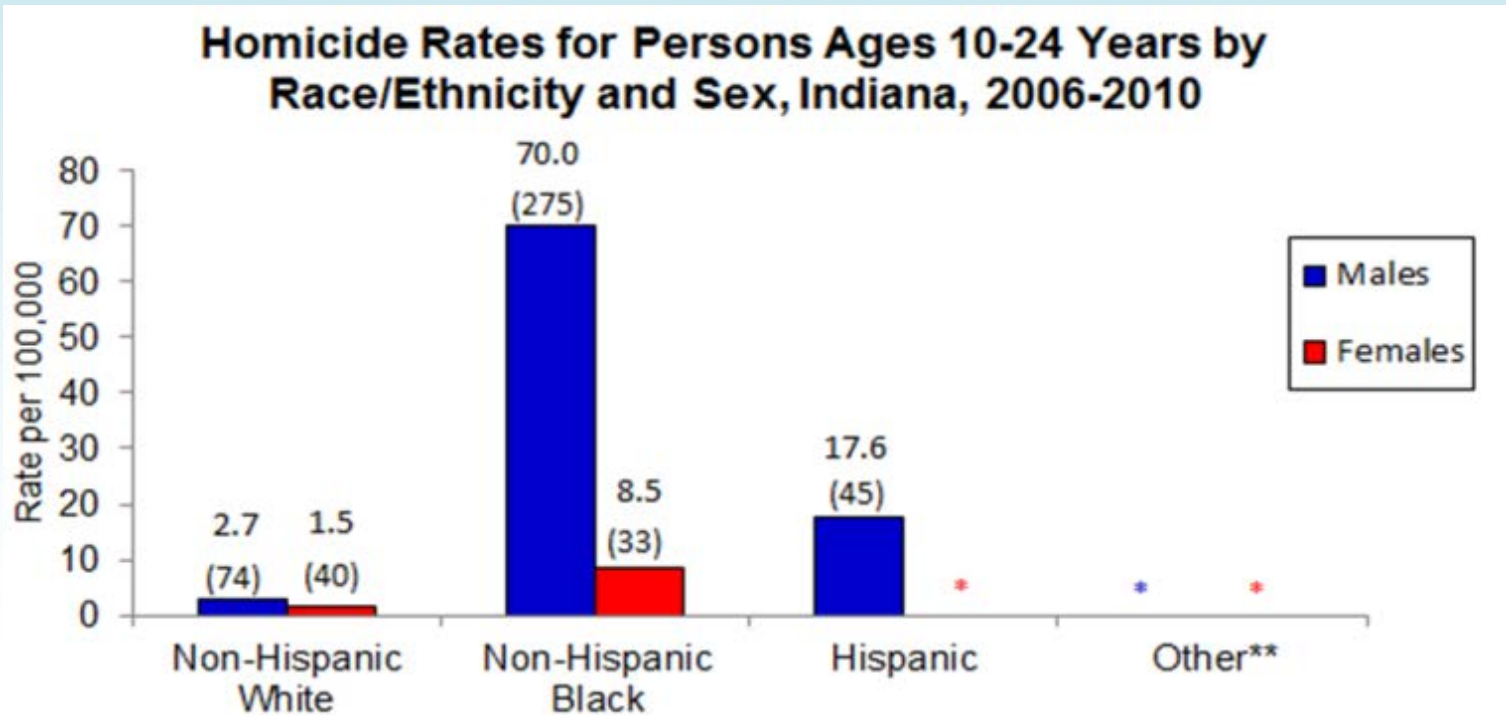


Population coverage
was 838,650

TOTAL violent crime
reported 9,942

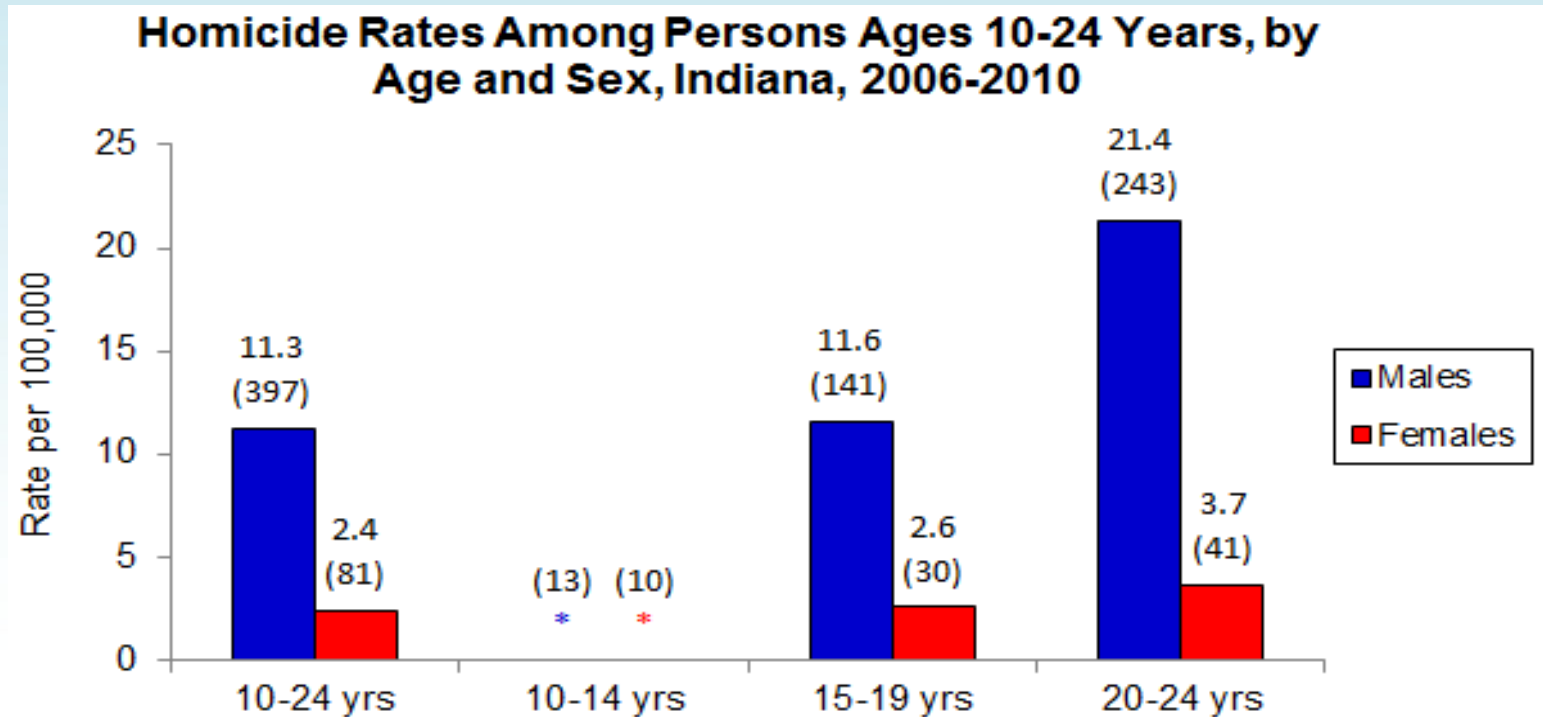
FBI, Uniform Crime Reports as
prepared by the National Archive
of Criminal Justice data

Scope of the Problem



* Race-specific rates and number of deaths (in parentheses) are provided above each bar. Rates are not presented where the number of deaths were fewer than 20 because they are statistically unreliable; counts below 10 are not presented due to confidentiality concerns.

Scope of the Problem



* Age-specific rates and number of deaths (in parentheses) are provided above each bar. Rates are not presented where the number of deaths were fewer than 20 as they are statistically unreliable; counts below 10 are not presented due to confidentiality concerns.

http://www.cdc.gov/violenceprevention/youthviolence/stats_atta_glance/in.html

Injury Recidivism

- Patients with repeat presentations for new injuries
- Medical costs
 - Average 2 day ICU stay for a GSW with a single surgery - >\$100,000
- Rates as high as 55%
 - Eskenazi 30.8% (early 2000)

Violence Intervention Injury Prevention

- Required by the American College of Surgeons
- Violence is preventable
 - Concentrate on lifestyle and risk related choices
- **PRIORITY**
 - 45% of individuals will be reinjured in 5 years and 20% will be killed
 - Thanks to advances in trauma care patients are more likely to survive
 - Victims can become perpetrators

Trauma and Injury



What is Trauma?

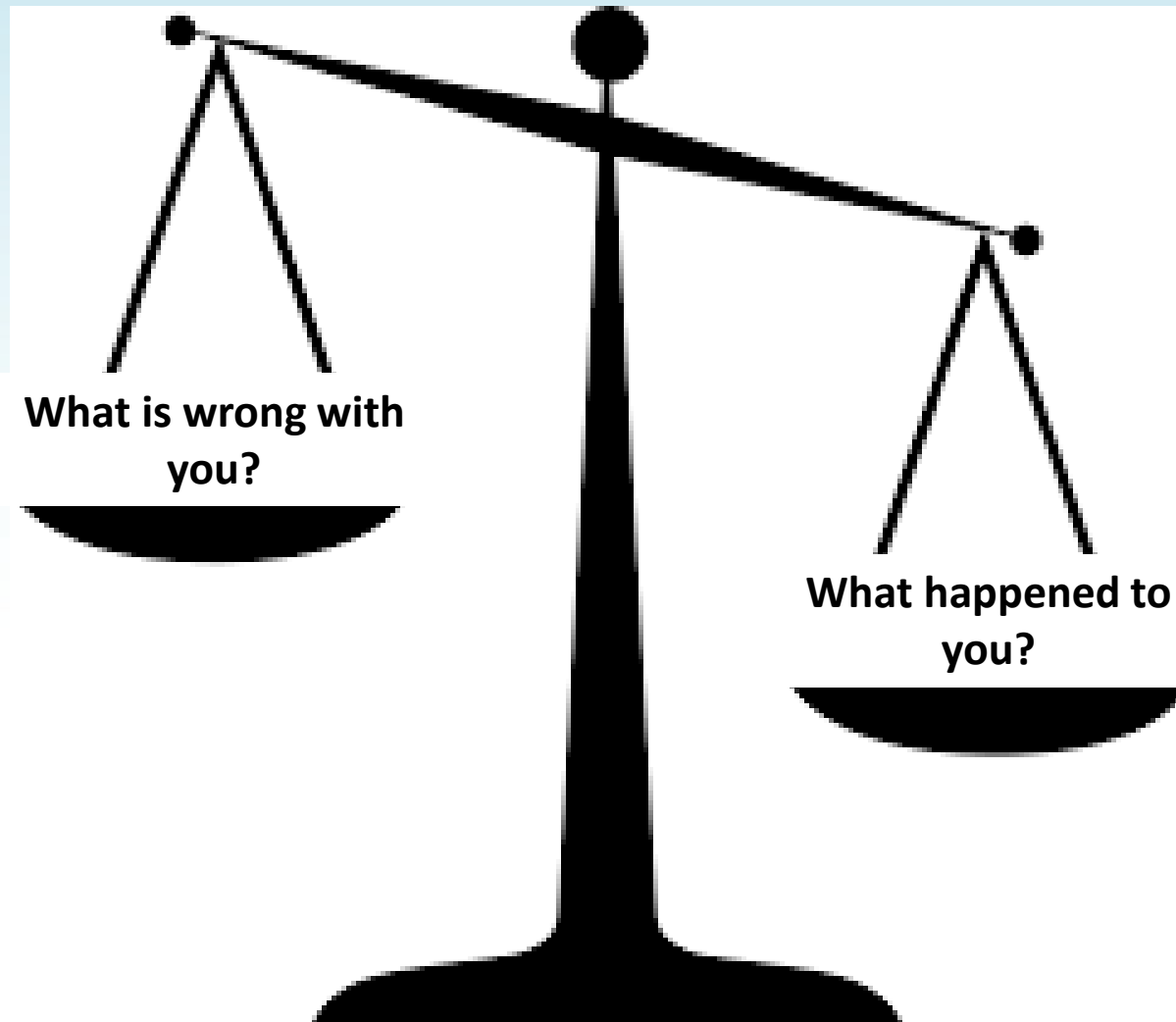
- Deeply distressing or disturbing event
- Overwhelming
- Accident, rape or natural disaster

What is Trauma?

- Acute trauma
 - Single event
- Complex trauma
 - Extended exposure
- Effects from trauma exposure
 - Acute
 - Chronic
 - Delayed-onset

Bath, H. (2008). The three pillars of trauma-informed care. *Reclaiming children and youth*, 17(3), 17-21.

Trauma Informed Practice



Hospital-Based Violence Intervention Programs (HVIP)

- Violence is preventable
- Teachable moment

HVIP

- Brief intervention
- Intervention Specialist
 - Street dynamics of violence

HVIP

- Long-term case management
- Trauma informed practice
- Supplement the patient's desire to stay safe
- Connect to community and government resources as well as mental health services

Prescription for Hope

- Evidence based violence and crime prevention program
- Reducing repeated violence related injury and criminal activity
- Life changing
- Life saving

Prescription for Hope

- Inclusion
 - Admission to Eskenazi Health
 - Shooting/Stabbing/Assault
 - Screened while in hospital
- Family/Friends
- Community referrals



Prescription for Hope

- Goals

- Reduce violent injury recidivism and readmission of participants to the Smith Level I Shock Trauma Center.
- Prevent first time violent injury and criminal activity in high-risk youth referred by community partners.
- Reduce crime and arrest in enrolled youth participants.
- Mentor and educate participants to develop effective life skills for positive citizenship behavior .
- Provide community education and information on violence and crime prevention to promote safer homes and neighborhoods.

Prescription for Hope

- Goals cont.
 - Accomplish reduced recidivism through partnerships with a network of community agencies and program partners.
 - Provide accessible programs and opportunities for youth and family assistance and personal development.

Prescription for Hope

- Personal/Family empowerment
- Wraparound services
- Links to community programs
- Risk/Protective factors
 - Intensive case management

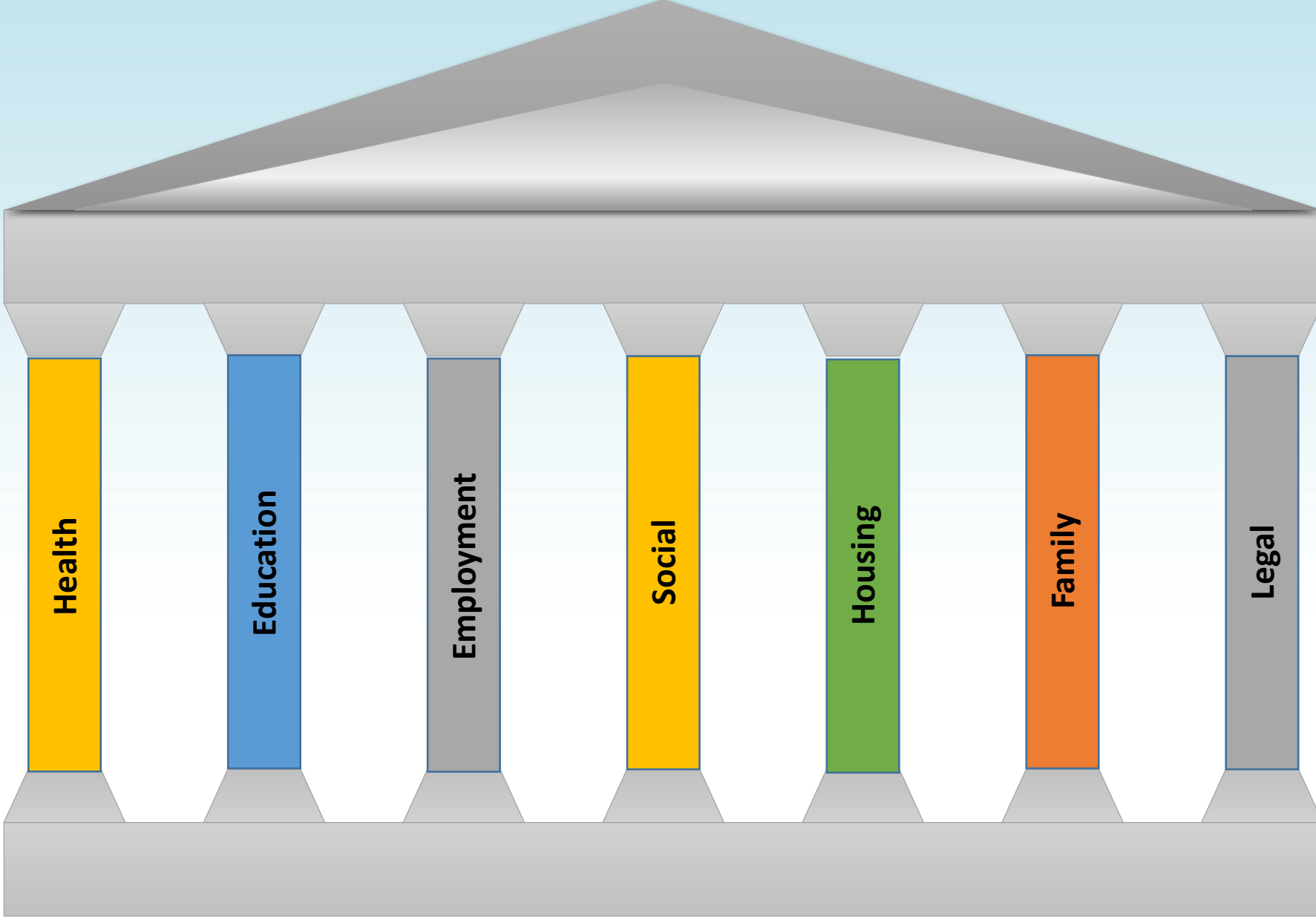
Risk and Protective Factors

- Less Likely

- Commitment to school
- Supportive, caring relationships with adults
- Parental monitoring
- Recognition for conventional behavior
- Friends who stay out of trouble
- Intolerant attitude toward deviance

- More Likely

- Substance abuse
- Mental illness
- Injury recidivism
- Physical aggression
- Poverty
- Antisocial parents & peers
- Poor education
- Disenfranchisement



Health

Education

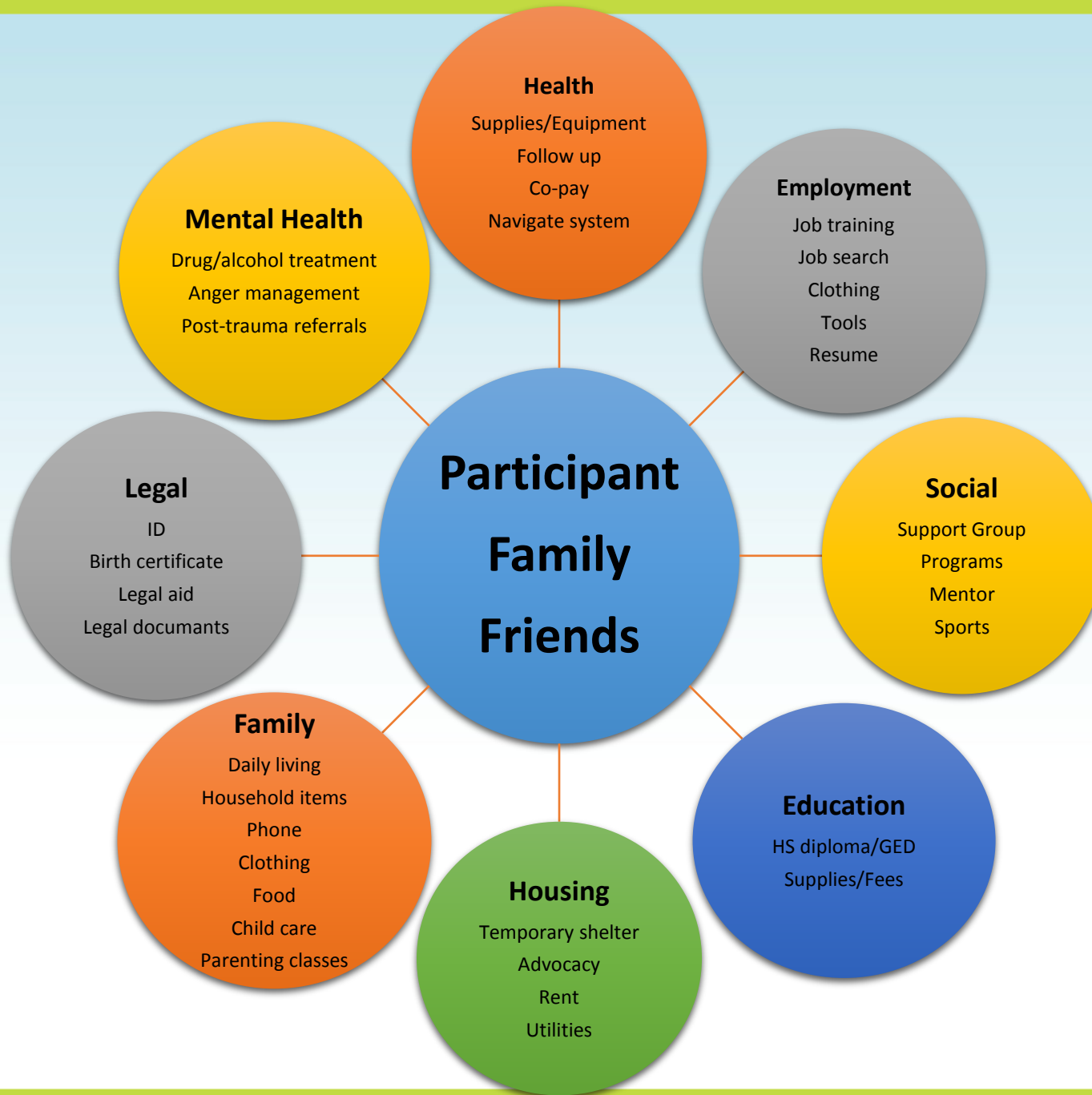
Employment

Social

Housing

Family

Legal



Prescription for Hope Priorities

- Treatment for
 - Addiction
 - Mental health
- Education
 - GED
 - Return to school
- Employment
 - Resume
 - Job training
- Emotional factors
 - Anger/Conflict/Relationship
- Primary care
 - Insurance

Prescription for Hope

- Medical recidivism rate decrease
 - 30.8% to 4.6%
- Treated
 - 2009-2012 257 participants
- Current caseload
 - National average is 20
 - Maintain 20-25 based on acuity

Prescription for Hope Team



Questions?

Contact Information

Wendy St. John, RN

Trauma Program Manager

wendy.stjohn@eskenazihealth.edu

Office: 317.880.5032

Dannielle Gilyan MSN, RN, CEN

Injury Prevention Coordinator

dannielle.gilyan@eskenazihealth.edu

Office: 317.880.5037



ESKENAZI
HEALTH